

 Bematech	<h1>TECHNICAL UPDATE</h1>	Number: 0801001 Page: 1/3 Date: 11/01/2008
---	---------------------------	---

From:	Bematech R&D Department		
Description:	Release Notes for MP-4000 TH Spooler Drivers v2.0.1		
Product(s) affected:	MP-4000 TH	Effective date: 11/01/2008	Edited by: Reggie Vivekananda
		Batch(es):	Approved by: João Cadamuro Jr.
Reference document(s):			

Subject: Release Notes Spooler Drivers for MP-4000 TH v2.0.1 - BemaSetup_MP4K v2.0.1

What's new?

1. Introduction

The version 2.0.1 of Spooler Drivers includes the following implementations:

- Fixes the configuration for USB interface by correctly disabling data compression
- Fixes some minor text messages issues

The earlier beta version 2.0.0 of Spooler Drivers includes the following implementations:

- Fixes printing with MP-4000 TH firmware version 2.0 and USB interface
- Fixes an issue on port monitor printing function
- Fixes a bug in the installation for Windows 2000
- Fixes an issue on installing the spooler driver on a Windows Embedded
- Adds an option to select the printer firmware version and sets it to 2.x by default
- Fixes Data Compression functionality
- The Data Compression is disabled by default when using USB interface and enabled when using all other interfaces

2. Known Issues

2.1 Print Test Page Dialog

Sometimes the "Print Test Page" dialog stays behind the installation window, which prevents the BemaSetup_MP4K from showing the Finish page and terminate the installation.

Workaround: press ALT+TAB to alternate between windows and choose the window named BemaInstaller to correctly show the "Print Test Page" dialog.

2.2 USB driver on Windows Embedded

After USB drivers are installed and the printer is turned on, the Windows Embedded fails to find the BemaUSB.sys file.

Workaround: you must select BemaUSB.sys file in the folder "Program Files\Bematech\MP-4000 TH\Spooler\driver\usb\x86" from the dialog box presented by Windows to allow the correct final installation of the device driver.

2.3 USB conflicts with some Intel controllers

There are some Intel USB controllers that may conflict with MP-4000 TH USB interface. The list includes Intel 82801 DB/DBM and Intel 82801 AB/EB and may be found on chipsets like Intel 852GM. The symptoms varies: the printer may be not recognized or may present malfunction during printing.

Workaround: you must update the controller driver, as follows:

1. Right-click My Computer and select Properties. Click the Hardware tab and the Device Manager button
2. Expand Universal Serial Bus controllers
3. Double-click the appropriate Intel 82801 Universal Host Controller .
4. Click the Driver tab.
5. Click the Update Driver button. When the Upgrade Device Driver Wizard appears, click Next .
6. Select "Display a list of the known drivers for this device so that I can choose a specific driver" and click Next
7. Select Standard Universal PCI to USB Host Controller, and click Next
8. Continue through the Upgrade Device Driver Wizard, and click Finish
9. Restart the computer and reinstall de printer drivers.

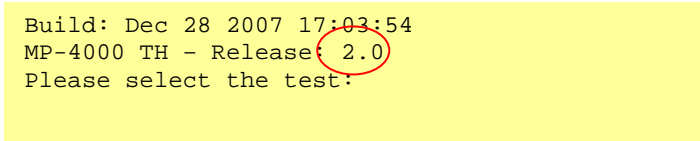
3. Attention

The spooler driver has been optimized for MP-4000 TH printers with firmware version 2.0 or later when you're using USB interface.

If the printer is using an earlier version of the firmware and a USB interface, the drivers must be configured as described in section 5.

4. Discovering Printer Firmware Version

You can obtain the firmware version of your printer during self-test at power on. Turn on the printer with the "Feed" button pressed until the printer starts to print the test menu. The first lines will tell which firmware version is installed, as shown on figure 1.



```
Build: Dec 28 2007 17:03:54
MP-4000 TH - Release: 2.0
Please select the test:
```

Figure 1. *Discovering firmware version*

5. Configuring the spooler driver to work with MP-4000 TH firmware version 1.x

Note: You only need to change the firmware version on printer configuration if you're using USB interface.

To configure the spooler driver to work with firmware version 1.x, you must change the printer properties by right-clicking on printer from "Printers & Faxes" and choosing "Properties". Then you must choose the tab "Device Settings". In this tab, you will see the "Firmware Version" option, as show on figure 2.

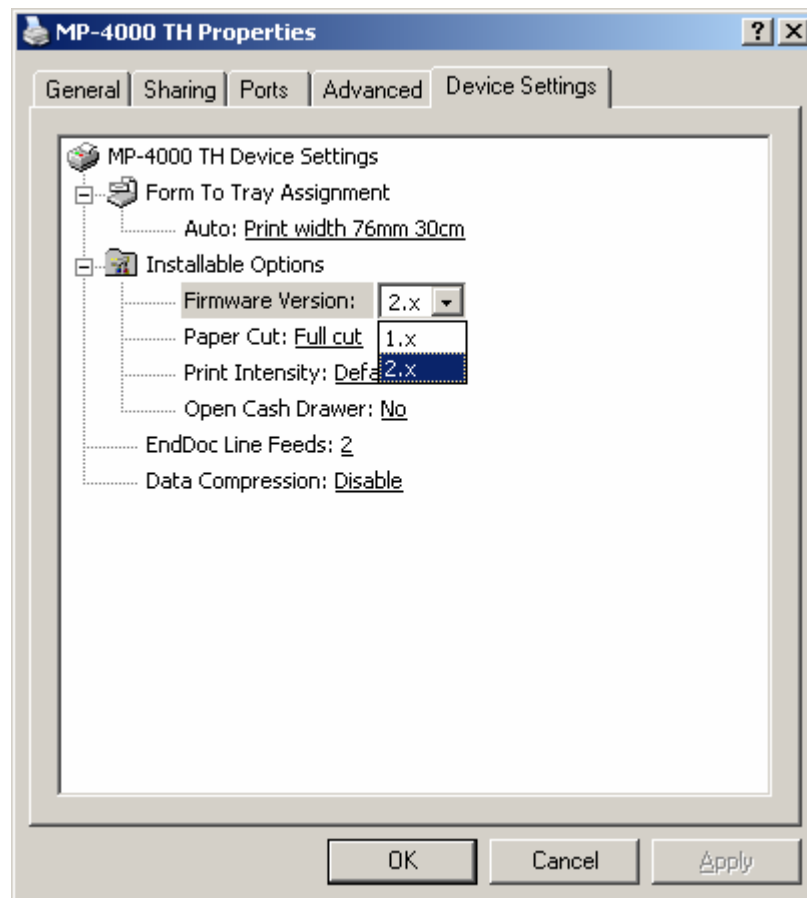


Figure 2. Device settings tab – firmware version

Clicking in the drop down arrow you can select "1.x" version, instead of the default "2.x" version. This modification will take place after pressing "Apply" button.

6. Choosing the right Data Compression

The Data Compression option is a feature that optimizes data transfers for low speed interfaces. This option must be disabled if you're using a USB interface with firmware version 2.0 or later. It must be enabled in all other cases.